

**DON'T IMAGINE WHAT'S  
GOING ON IN YOUR HEAD.  
GET AN IMAGE OF IT.**

## **AMYVID** **BETA-AMYLOID SCAN**



### **PURPOSE AND SAFETY SUMMARY**

Important Facts About Amyvid® (am-uh-vid).

It is also known as florbetapir F 18.

What is Amyvid used for?

Amyvid is an imaging agent used in adults who have thinking or memory problems and who are being assessed for Alzheimer's Disease (AD) or some other causes of these symptoms. Amyvid is given by injection and it requires a prescription.

Amyvid is used with a machine called a positron emission tomography (PET) scanner. The scan shows whether a person's brain has an abnormal buildup of a protein called beta-amyloid. When beta-amyloid proteins build up and clump together, they form lumps in the brain called plaques.

What is a negative scan?

An Amyvid scan that shows few or no plaques in the brain is called a negative scan. This means that AD is probably not the cause of the person's thinking or memory problems. This is only true as of the time of the scan.

What is a positive scan?

An Amyvid scan that shows a similar amount of plaque as scans from people with AD is called a positive scan. People with other conditions that cause thinking or

memory problems as well as older people with normal thinking or memory can also have that amount of plaque in their brain.


Doctors use Amyvid in combination with other tests. A positive Amyvid scan does not mean you definitely have AD or another thinking or memory disorder. Amyvid should not be used to predict dementia or other brain conditions. It also should not be used to track whether a treatment is working.

### **Warnings**

- Errors may happen when Amyvid scan images are read. In clinical studies, a scan read as negative, when it was actually positive, accounted for most of these errors. An Amyvid scan only indicates whether beta-amyloid plaques, which are a buildup of proteins in the brain, are present at the time of the scan. Even if the scan is negative, it is possible to develop plaques in the future.
- Amyvid, like other radioactive diagnostic agents, adds to overall, long-term combined radiation exposure. Long-term combined radiation exposure may increase risk of cancer.

*Lilly*

**Please see full Purpose and  
Safety Summary on [page 6](#).**

  
**AMYVID®**  
Florbetapir F 18 Injection

# YOU KNOW THAT YOU'RE FORGETFUL AND CONFUSED. IT MAY BE TIME TO EXPLORE WHY

Losing your keys. Forgetting someone's name. Finding yourself confused about a routine task. **These may be common signs of normal aging—or they could be signs of thinking or memory issues.**



Diagnosing potential causes of thinking or memory issues can be difficult, as many of these conditions have similar symptoms.



To evaluate what might be the problem, your doctor may run a few tests that assess your thinking, memory, and decision-making abilities.



As part of the clinical assessment, your doctor may also ask you to have an imaging test performed that detects whether there is a buildup of a protein called amyloid plaque in your brain.

## WHAT IS AMYLOID?

Amyloid is a protein that your body produces naturally that may clump together and create beta-amyloid plaques, which can block communication between signals in the brain.

**Evaluating the presence of amyloid in your brain can be helpful in understanding your thinking or memory issues.**

## IN 2012, AMYVID BECAME THE FIRST FDA-APPROVED TEST FOR IMAGING BETA-AMYLOID IN THE BRAIN

Amyvid highlights beta-amyloid plaques that may be present in the brain using a tracer (radioactive fluorine). This is detected during a “PET” scan.

PET=positron emission tomography.

### SELECT SAFETY INFORMATION

#### Risk of Misreading Scans and Other Errors

Errors may happen when Amyvid scan images are read. In clinical studies, a scan read as negative, when it was actually positive, accounted for most of these errors. An Amyvid scan only indicates whether beta-amyloid plaques, which are a buildup of proteins in the brain, are present at the time of the scan. Even if the scan is negative, it is possible to develop plaques in the future.

#### Radiation Risk

Amyvid, like other radioactive diagnostic agents, adds to overall, long-term combined radiation exposure. Long-term combined radiation exposure may increase risk of cancer.

**Please see Purpose and Safety Summary on [page 6](#).**



# GETTING A PICTURE OF THE SCANNING PROCESS

## PREPARING FOR YOUR AMYVID APPOINTMENT IS EASY WITH THESE HELPFUL TIPS!

### BEFORE THE PROCEDURE



- Make sure to drink plenty of water 2 hours before your appointment
- Bring a comfy pair of socks for the PET scan—it can be cold in there!
- Arrive 15 to 30 minutes early just in case you need to fill out some paperwork
- The duration of the exam can vary, but plan to be at the scanning center for about 2 hours
- If you are accompanied by a loved one, they may be required to stay in the waiting room during the scanning process

### DURING THE EXAM



At the scanning center, a nurse or technologist will inject Amyvid into one of your veins



You will then need to wait approximately 30 to 50 minutes for Amyvid to highlight any plaques that may be in your brain



You will then receive a 10-minute PET scan

### AFTER THE PROCEDURE



- Be sure to schedule a follow-up appointment with your doctor to go over your results together
- Drink plenty of water and relax!



Have questions about Amyvid?

**Call 800-LillyRx to get answers**

### SELECT SAFETY INFORMATION

#### What are the most common side effects of Amyvid?

- Headache
- Muscle or joint pain
- Increased blood pressure
- Nausea
- Tiredness
- Injection site reaction (bleeding, irritation, or pain where Amyvid is injected)

You are encouraged to report negative side effects of prescription drugs to the FDA.

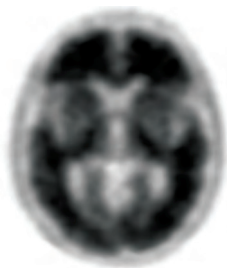
Visit [www.fda.gov/safety/medwatch](http://www.fda.gov/safety/medwatch) or call 1-800-FDA-1088.

Please see Purpose and Safety Summary on [page 6](#).

# WHETHER THE SCAN IS POSITIVE OR NEGATIVE, IT CAN GIVE YOU A PICTURE OF YOUR CONDITION

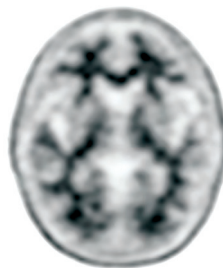
An Amyvid PET scan is an imaging test that, when used in combination with other tests, can help your doctor make a more informed diagnosis and help you understand why you are experiencing thinking or memory issues.

## POSITIVE



If the Amyvid scan is positive, it could help your doctor determine if you may have Alzheimer's disease (AD).

## NEGATIVE



If the Amyvid scan is negative, it's a sign that your symptoms probably aren't caused by AD.

- The amount of amyloid plaque shown in the positive image is present in people with AD, but may also be present in people with other types of conditions affecting the brain as well as older people without those conditions
- The presence of amyloid plaques alone does not establish a diagnosis of AD or other brain disorder

Amyvid images should be interpreted only by doctors who have completed a special training program.

**Understanding your amyloid status can help your doctor explain why you are experiencing thinking or memory issues.**

AD=Alzheimer's disease; PET=positron emission tomography.

### SELECT SAFETY INFORMATION

#### Risk of Misreading Scans and Other Errors

Errors may happen when Amyvid scan images are read. In clinical studies, a scan read as negative, when it was actually positive, accounted for most of these errors. An Amyvid scan only indicates whether beta-amyloid plaques, which are a buildup of proteins in the brain, are present at the time of the scan. Even if the scan is negative, it is possible to develop plaques in the future.

#### Radiation Risk

Amyvid, like other radioactive diagnostic agents, adds to overall, long-term combined radiation exposure. Long-term combined radiation exposure may increase risk of cancer.

Please see Purpose and Safety Summary on [page 6](#).

# WHAT CAN YOU MAKE WITH A PICTURE OF THE BETA-AMYLOID IN YOUR BRAIN? DECISIONS

## POSITIVE

### KNOW

Your doctor should consider a positive scan as evidence of significant beta-amyloid plaques in the brain.

### PLAN

Your doctor will consider the Amyvid scan results with other test results and observations to determine the appropriate next steps in diagnosis.

### ACT

You and your doctor can work together to find the best way to manage your condition.

## NEGATIVE

### RECOGNIZE

A negative scan means that it is unlikely that your symptoms are caused by Alzheimer's disease (AD).

### ADJUST

Avoid unnecessary treatments that could result from an incomplete and/or incorrect diagnosis.

### REFOCUS

Together with your doctor, you can start looking into other possible causes of your symptoms.

**Go to your follow-up appointment with your doctor to tackle these thinking or memory issues together**

## SELECT SAFETY INFORMATION

### What are the most common side effects of Amyvid?

- Headache
- Muscle or joint pain
- Increased blood pressure
- Nausea
- Tiredness
- Injection site reaction (bleeding, irritation, or pain where Amyvid is injected)

You are encouraged to report negative side effects of prescription drugs to the FDA.

Visit [www.fda.gov/safety/medwatch](http://www.fda.gov/safety/medwatch) or call 1-800-FDA-1088.

Please see Purpose and Safety Summary on [page 6](#).

## PURPOSE AND SAFETY SUMMARY

Important Facts About Amyvid® (am-uh-vid). It is also known as florbetapir F 18.

What is Amyvid used for?

Amyvid is an imaging agent used in adults who have thinking or memory problems and who are being assessed for Alzheimer's Disease (AD) or some other causes of these symptoms. Amyvid is given by injection and it requires a prescription.

Amyvid is used with a machine called a positron emission tomography (PET) scanner. The scan shows whether a person's brain has an abnormal buildup of a protein called beta-amyloid. When beta-amyloid proteins build up and clump together, they form lumps in the brain called plaques.

What is a negative scan?

An Amyvid scan that shows few or no plaques in the brain is called a negative scan. This means that AD is probably not the cause of the person's thinking or memory problems. This is only true as of the time of the scan.

What is a positive scan?

An Amyvid scan that shows a similar amount of plaque as scans from people with AD is called a positive scan. People with other conditions that cause thinking or memory problems as well as older people with normal thinking or memory can also have that amount of plaque in their brain.

Doctors use Amyvid in combination with other tests. A positive Amyvid scan does not mean you definitely have AD or another thinking or memory disorder. Amyvid should not be used to predict dementia or other brain conditions. It also should not be used to track whether a treatment is working.

### Warnings

- Errors may happen when Amyvid scan images are read. In clinical studies, a scan read as negative, when it was actually positive, accounted for most of these errors. An Amyvid scan only indicates whether beta-amyloid plaques, which are a buildup of proteins in the brain, are present at the time of the scan. Even if the scan is negative, it is possible to develop plaques in the future.

- Amyvid, like other radioactive diagnostic agents, adds to overall, long-term combined radiation exposure. Long-term combined radiation exposure may increase risk of cancer.

### Common side effects

- Headache
- Muscle or joint pain
- Higher blood pressure. This is when the force of blood flowing through your blood vessels is too high.
- Nausea
- Tiredness
- Injection site reaction (bleeding, irritation, or pain where Amyvid is injected)

Tell your doctor if you have any side effects.

**You can report side effects at 1-800-FDA-1088 or [www.fda.gov/medwatch](http://www.fda.gov/medwatch).**

### Before you receive Amyvid

- Tell your doctor if you are pregnant, breast-feeding, or plan to become pregnant or breastfeed.
- Tell your doctor about all medicines you take, including prescription and over-the-counter medicines, as well as vitamins and herbal supplements.

### How to receive Amyvid

Amyvid should only be given by healthcare professionals who are qualified by specific training and experience in the safe use and handling of radioactive materials safely.

### Learn more

For more information, call 800-LillyRx or go to [amyvid.com](http://amyvid.com).

This summary provides basic information about Amyvid. It does not include all information known about this drug. Read the information given to you about Amyvid before your PET scan. This information does not take the place of talking with your doctor. Be sure to talk to your doctor or other healthcare provider about Amyvid. Your doctor is the best person to help you decide if an Amyvid PET scan is right for you.

AM CON BS 10DEC2021

